



CARTERREMY
ESTATES

232 Arisdale Avenue ,
Coming Soon £485,000-£555,000

🛏 5 🚿 3 🛋 2

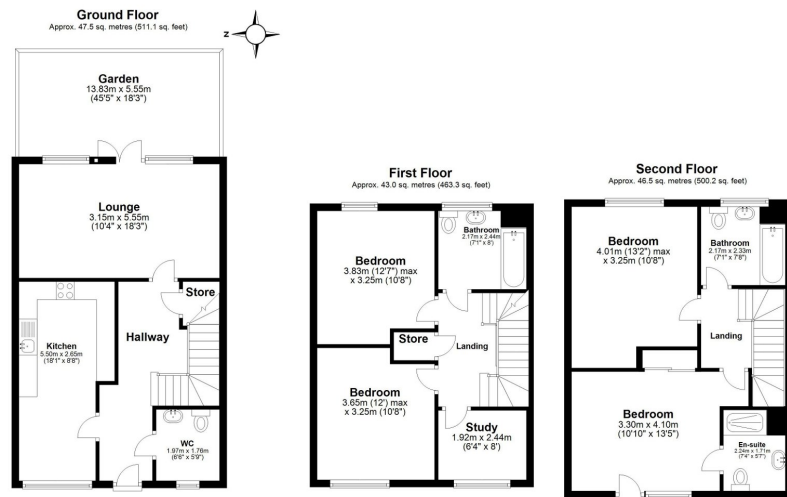


Introducing an exquisite 5 bedroom semi-detached home, boasting expansive living spaces throughout, now available for sale guided at £485,000 to £555,000 in the highly sought-after location of South Ockendon. This stunning property offers 3 bathrooms and 4 generously sized bedrooms, with an additional 5th bedroom that surpasses the average size. Don't delay, as opportunities to secure this exceptional house are limited!

Situated in close proximity to excellent transport links, including direct connections to London, this home is perfectly positioned for those seeking convenient commuting options. Furthermore, local amenities are just a stone's throw away, ensuring all your daily needs are easily met. Additionally, the presence of excellent schools in the area makes this property an ideal choice for families.

Don't miss out on this amazing opportunity to acquire a remarkable family home. Schedule a viewing today and embrace the lifestyle this property has to offer!





Total area: approx. 137.0 sq. metres (1474.6 sq. feet)

For illustration purposes only. www.moodphoto.co.uk @moodphotohub

Plan produced using PlanIt.

Arisdale Avenue

- Stunning 5 bedroom semi-detached home
- Highly sought-after location in South Ockendon
- 4 extremely spacious bedrooms
- Excellent transport links with direct links to London
- Local amenities in close proximity
- Spacious living areas throughout
- 3 bathrooms
- 5th bedroom larger than average
- Excellent schools nearby
- £485,000-£555,000



Where **dreams** come home

Cornwallis business centre,
Howard chase, Basildon,
Essex, SS14 3BB

T 01268 727757
E info@carterremy.co.uk
W www.carterremy.co.uk