

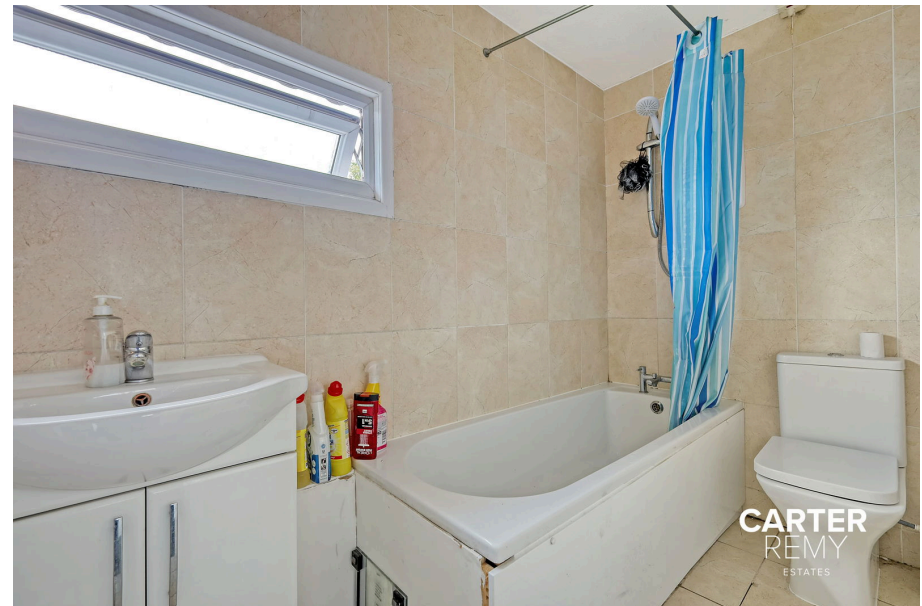


CARTERREMY
ESTATES

Alexandra Close, Grays, RM16

Guide Price £285,000

3 1 1

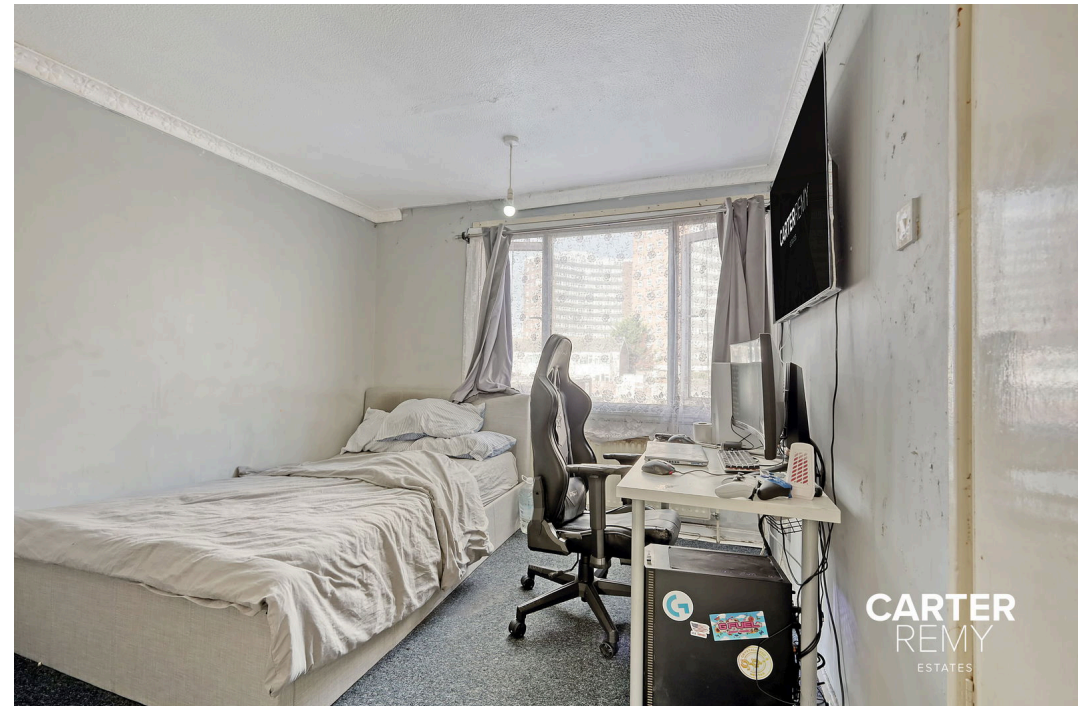


First Viewings on the Open Day Saturday 19th October call for appointment Guide price £285,000 to £325,000 This delightful 3-bedroom end of terraced house is a fantastic opportunity for first-time buyers or anyone looking to expand their property portfolio. Priced competitively, this home offers excellent value with the added bonus of a garage and off-street parking to the rear—perfect for everyday convenience.

As you step inside, you are greeted by a welcoming entrance leading to a practical ground floor cloakroom. The spacious lounge and large well-proportioned kitchen, providing ample space for all your daily activities, whether it's family meals or entertaining friends.

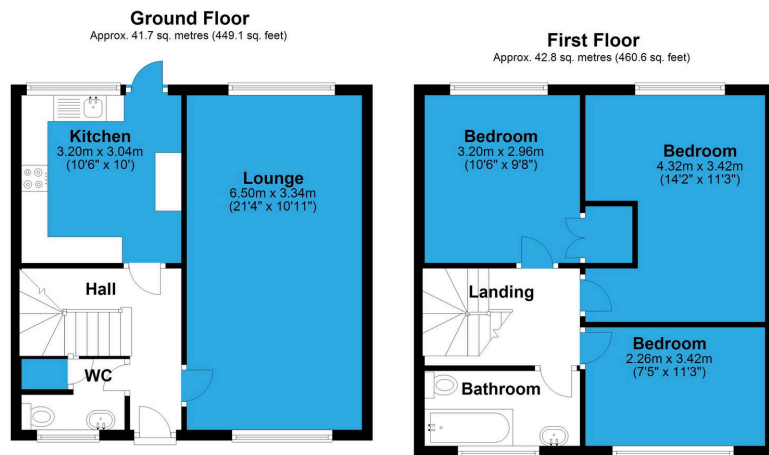
Heading up to the first floor, you'll find three generous double bedrooms, each offering a comfortable and inviting space to unwind. A family bathroom completes this level, ensuring that all your needs are catered for.

This property is ideally situated close to reputable schools and excellent transport links, making it a prime choice for families and commuters alike. With so much to offer, this home is sure to be at the top of many buyers' lists. Don't miss out on this opportunity—pick up the phone today to arrange your viewing!



CARTER
REMY
ESTATES

CARTER
REMY
ESTATES



Total area: approx. 84.5 sq. metres (909.7 sq. feet)
Alexandra Close, Grays

- Ideal for first-time buyers or property investors
- Priced competitively for excellent value
- 3 spacious double bedrooms for comfortable living
- Ground floor cloakroom for added convenience
- Bright and airy lounge
- Ample space for daily activities and entertaining
- Family bathroom on the first floor for easy access
- off-street parking for 2 cars
- Close to reputable schools and excellent transport links
- Don't miss out—schedule your viewing today!

