

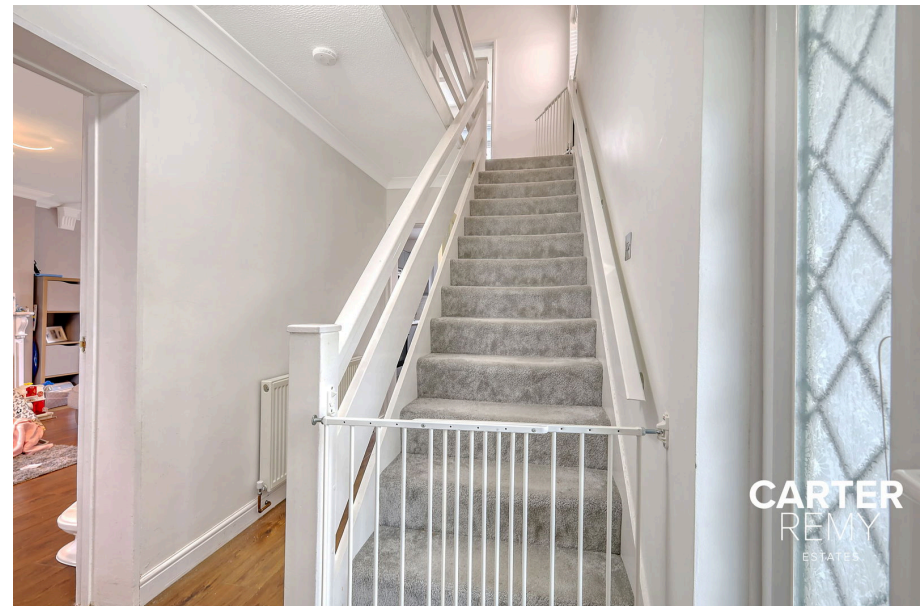


CARTERREMY
ESTATES

Hardie Road, Stanford-le-hope, SS17

Guide Price £365,000

3 1 2



Guide price £365,000-£385,000 Welcome to your future home! This delightful 3-bedroom semi-detached house offers a perfect blend of comfort, convenience, and potential. Situated in a sought-after neighbourhood, this property is ideal for families and commuters alike.

Enjoy generous living space with three well-proportioned bedrooms, providing plenty of room for family life or guests.

Benefit from convenient off-street parking, making it easy for residents and visitors alike.

Just a few minutes' walk from the train station, this home is perfect for commuters looking to travel into the city or beyond.

Located close to Hardie Park, you'll have access to beautiful outdoor spaces for leisure activities, picnics, and family outings.

This property offers the exciting potential to extend to the rear (subject to planning permission), allowing you to customize your living space to suit your needs.

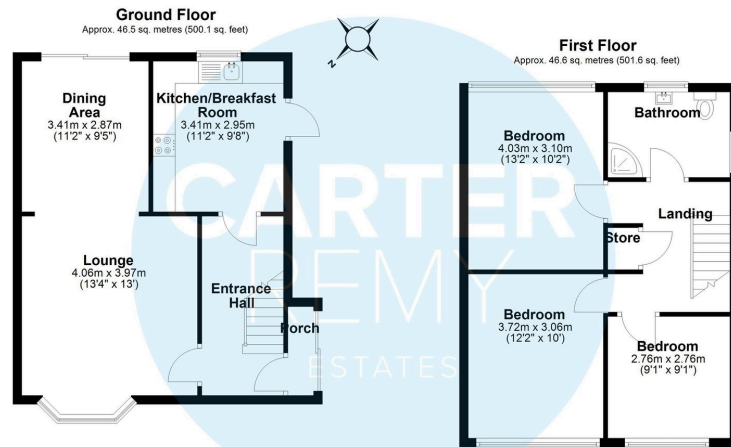
The house is situated in a welcoming neighbourhood, making it an ideal setting for families, with local amenities and schools nearby.

This home has been lovingly maintained and is ready for you to move in and make it your home.

Don't miss out on this fantastic opportunity to own a charming semi-detached house in a prime location.

Contact us today to arrange a viewing and take the first step towards your new home!





Total area: approx. 93.1 sq. metres (1001.7 sq. feet)

All measurements have been taken as a guide to prospective buyers only and are not precise. This plan is for illustrative purposes only and no responsibility for any error, omission or misstatement. The services, systems and appliances shown have not been tested and no guarantee as to their operability or efficiency can be given. Measurements may have been taken from the widest area and may include wardrobe/cupboard space. No guarantee is given to any measurements including total areas. Buyers are advised to take their own measurements.
Plan produced using PlanUp.

Hardie Road, Stanford Le Hope

- Charming 3-bedroom semi-detached house perfect for families
- Just minutes' walk from the train station for easy commuting
- Potential to extend to the rear (subject to planning permission).
- Well-maintained property, ready for you to move in.
- Ideal for families or those looking for investment opportunities.
- Convenient off-street parking available
- Close proximity to Hardie Park for outdoor leisure activities.
- Located in a sought-after family-friendly area
- Generous living space with well-proportioned bedrooms.
- Don't miss out—schedule a viewing today!

